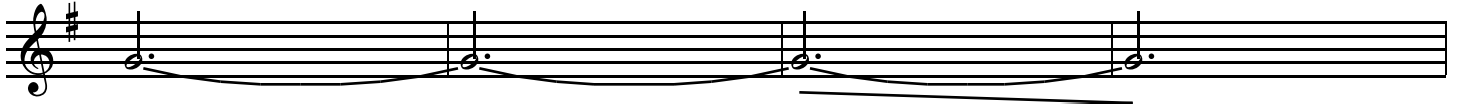




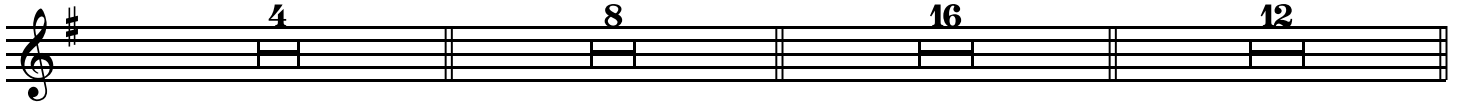
C



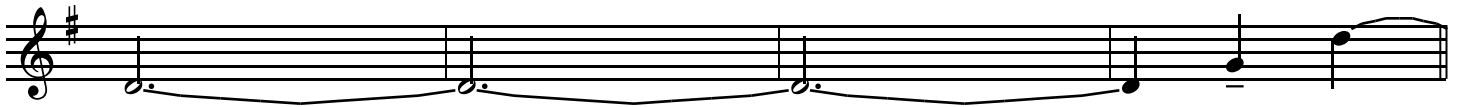
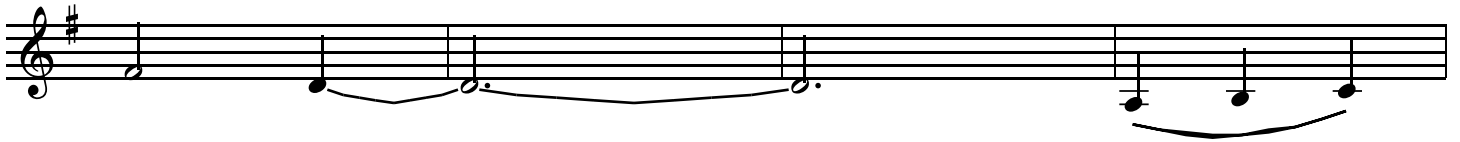
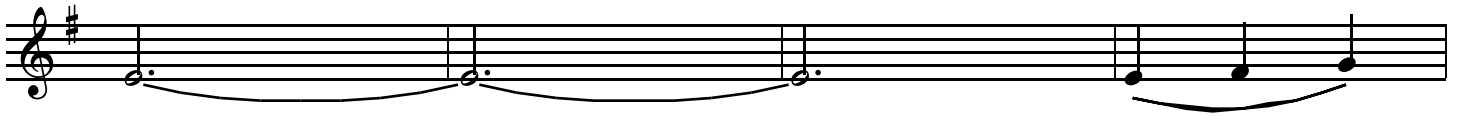
D

E

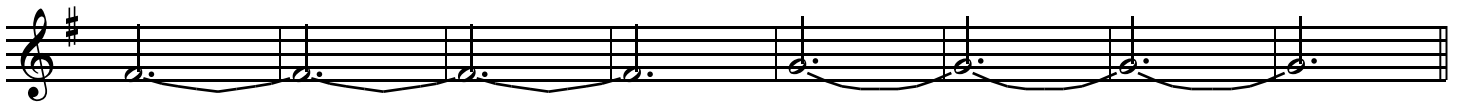
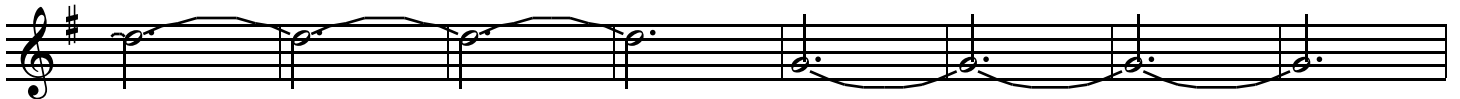
To tpt



F



G



**H**

Musical staff H, first line. Treble clef, key signature of one sharp (F#). Starts with a 7-measure rest, followed by a series of eighth notes with accents and slurs. Dynamics include *f* and a hairpin.

Musical staff H, second line. Treble clef, key signature of one sharp (F#). Starts with a 7-measure rest, followed by a long slur over several notes. Dynamics include *ff*.

**I**

Musical staff I, first line. Treble clef, key signature of one sharp (F#). Starts with an accented eighth note, followed by eighth notes with slurs and accents.

Musical staff I, second line. Treble clef, key signature of one sharp (F#). Continuation of the previous line with a long slur over several notes.

Musical staff I, third line. Treble clef, key signature of one sharp (F#). Starts with a 3-measure rest, followed by eighth notes with slurs and accents. Dynamics include *ff*.

Musical staff I, fourth line. Treble clef, key signature of one sharp (F#). Starts with a 5-measure rest, followed by a long slur over several notes. Dynamics include *ff*.

**J**

To flug

Musical staff J, first line. Treble clef, key signature of one sharp (F#). Starts with a 4-measure rest, followed by an 8-measure rest, then a 7-measure rest, and finally a series of notes with a slur. Dynamics include *p*.

Musical staff J, second line. Treble clef, key signature of one sharp (F#). Continuation of the previous line with a slur over several notes.