

Tpt 1

# Conversations

Up Jazz Waltz

Arranged By: Tom Kubis

1 A B C D

8 8 16 8

41 E F

8 8

57 G

*mf*

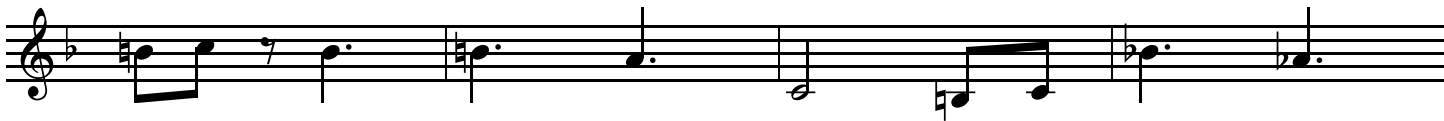
61

65

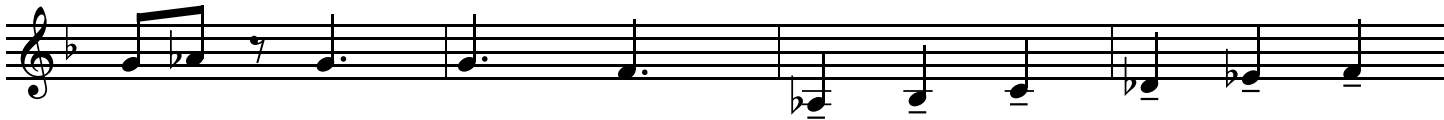
69

73 H

77



81



85



89

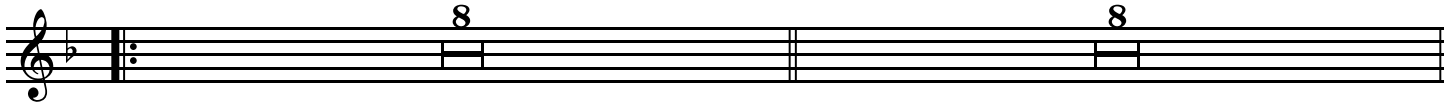


109

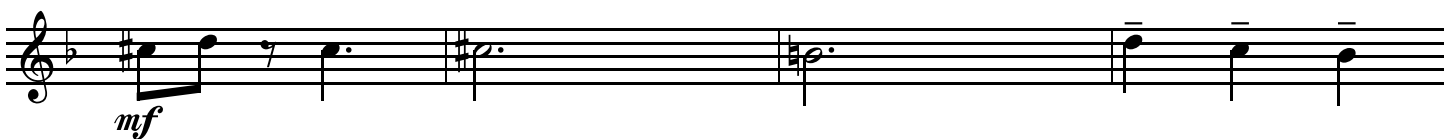


Solos BG each time

113



129



133

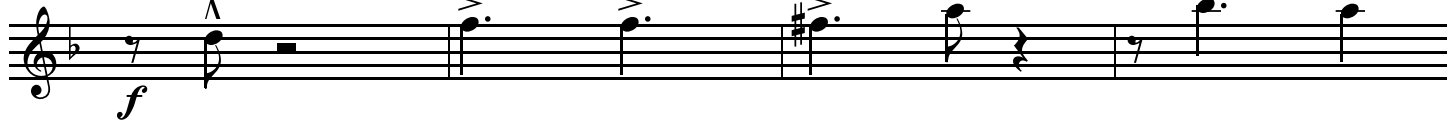


137

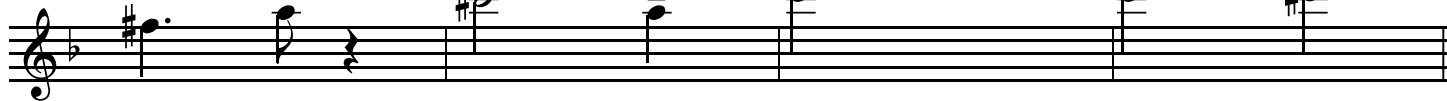


**K**

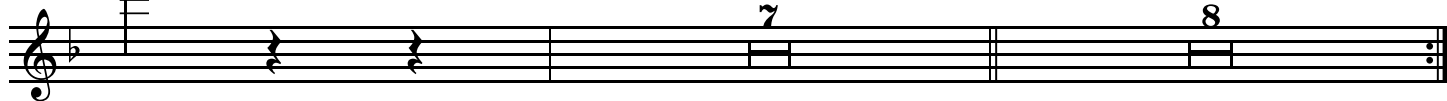
145



149



153



**L**

169



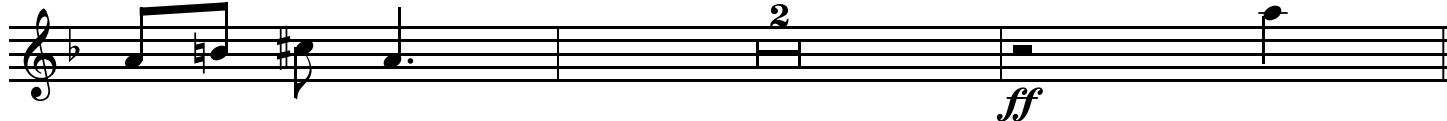
173



177



181



**M**

185

Musical staff for measure 185, starting with a treble clef and a key signature of one flat. The staff contains a sequence of notes: a quarter note G4 with a sharp sign, a quarter note A4, a quarter note B4 with an accent (>), a quarter note C5 with a sharp sign, a quarter note B4 with an accent (>), a quarter note A4, a quarter note G4, a quarter note F4, a quarter note E4, a quarter note D4 with an accent (>), and a quarter note C4 with an accent (>).

189

Musical staff for measure 189, starting with a treble clef and a key signature of one flat. The staff contains a sequence of notes: a quarter rest, a quarter note G4 with an accent (>), a quarter note A4 with an accent (>), a quarter note B4 with an accent (>), a quarter note C5 with an accent (>), a quarter note B4 with an accent (>), a quarter note A4, a quarter note G4, a quarter note F4, a quarter note E4, a quarter note D4 with a flat sign and an accent (>), and a quarter note C4 with a flat sign and an accent (>).

**N**

193

Musical staff for measure 193, starting with a treble clef and a key signature of one flat. The staff contains a sequence of notes: a quarter note G4 with a flat sign, a quarter note A4 with a flat sign, a quarter note B4 with an accent (>), a quarter note C5 with an accent (>), a quarter note B4 with an accent (>), a quarter note A4, a quarter note G4, a quarter note F4, a quarter note E4, a quarter note D4, a quarter note C4, and a quarter note B3 with a '5' above it.

201

Musical staff for measure 201, starting with a treble clef and a key signature of one flat. The staff contains a sequence of notes: a quarter note G4 with a '7' above it, a quarter note A4, a quarter note B4, a quarter note C5, a quarter note B4, a quarter note A4, a quarter note G4, a quarter note F4, a quarter note E4, a quarter note D4, a quarter note C4, and a quarter note B3 with a sharp sign. The dynamic marking *mf* is placed below the staff.

**O**

209

Musical staff for measure 209, starting with a treble clef and a key signature of one flat. The staff contains a sequence of notes: a quarter note G4, a quarter note A4, a quarter note B4, a quarter note C5, a quarter note B4, a quarter note A4, a quarter note G4, a quarter note F4, a quarter note E4, a quarter note D4, a quarter note C4, and a quarter note B3.

213

Musical staff for measure 213, starting with a treble clef and a key signature of one flat. The staff contains a sequence of notes: a quarter note G4, a quarter note A4, a quarter note B4, a quarter note C5, a quarter note B4, a quarter note A4, a quarter note G4, a quarter note F4, a quarter note E4, a quarter note D4, a quarter note C4, and a quarter note B3.

217

Musical staff for measure 217, starting with a treble clef and a key signature of one flat. The staff contains a sequence of notes: a quarter note G4, a quarter note A4, a quarter note B4, a quarter note C5, a quarter note B4, a quarter note A4, a quarter note G4, a quarter note F4, a quarter note E4, a quarter note D4, a quarter note C4, and a quarter note B3 with a fermata above it.

Empty musical staff consisting of five lines.