



29

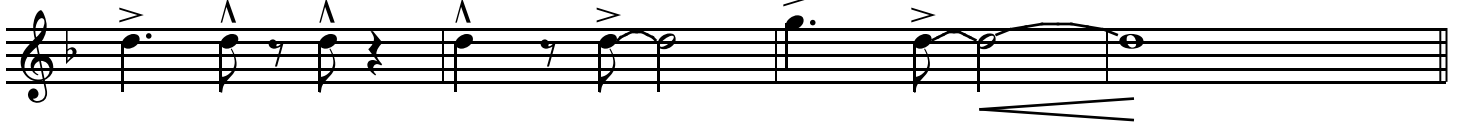


**D**

33

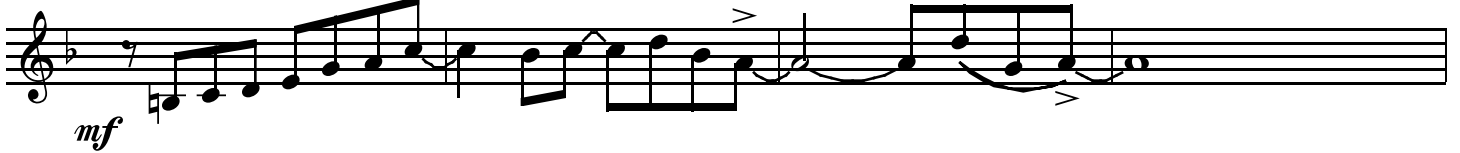


37



**E**

41



45

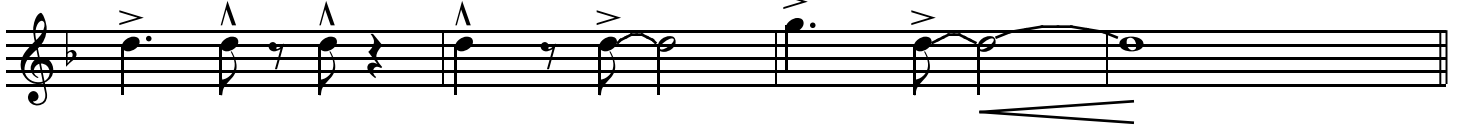


**F**

49



53



**G**

57



61

*p* *f* *ff*

solos BG 2, 4, 6

65

*mf*

69

*mf*

73

*mf*

77

*mf*

H

81

*f*

85

*f*

89

*f*



125 **Drums**  
*ff*

136  
*mf*

140

144

148

152  
*p*

156  
*ff*