

Tpt 1

Two Samba To Go

Arranged By: Tom Kubis

First musical staff, starting with a dynamic marking of *f*. It contains a series of eighth and sixteenth notes with accents and slurs.

Second musical staff, ending with a dynamic marking of *ff*. It continues the melodic line with various articulations.

A

B

C

Third musical staff, labeled "To flug" at the beginning. It features rests for 4, 8, and 7 measures, followed by a melodic phrase starting with a dynamic marking of *mf*.

D

Fourth musical staff, continuing the melodic line with accents and slurs.

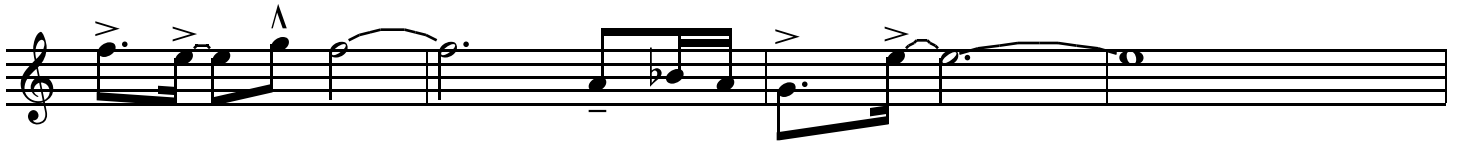
Fifth musical staff, continuing the melodic line with accents and slurs.

E

Sixth musical staff, continuing the melodic line with accents and slurs.

Seventh musical staff, starting with a dynamic marking of *f*. It features a double bar line with a "2" above it, followed by a melodic phrase.

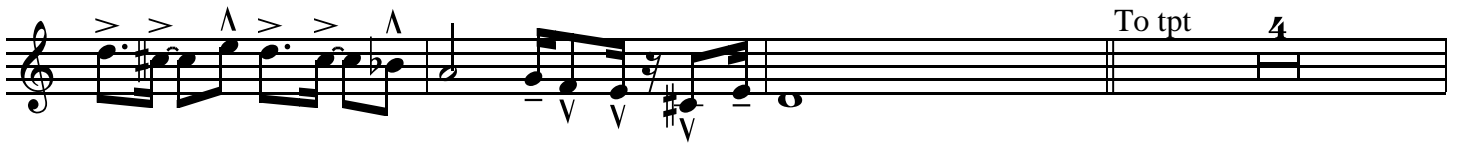
F



G



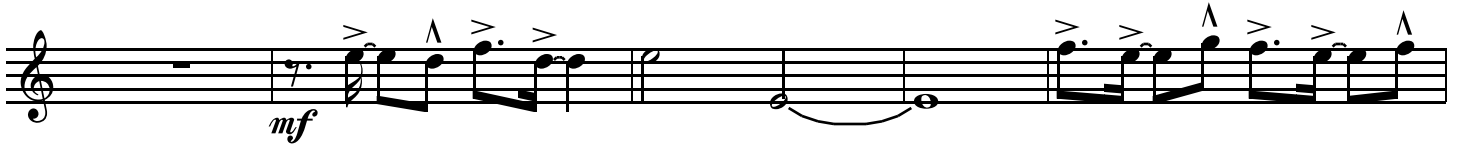
H



To tpt 4



I



J



solos play all x's

K

16

f

L

3

lastxo

f *ff*

M

2

ff

N

6

f