

Tpt 1

Infant Holy, Infant Lowly

Strait 8th Waltz

Arranged By: Tom Kubis

Musical staff with treble clef, key signature of three sharps (F#, C#, G#), and 3/4 time signature. It contains a whole rest followed by a double bar line and a measure with a whole note chord marked with a '4' above it.

A

Musical staff with treble clef, key signature of three sharps, and 3/4 time signature. It contains a sequence of eighth notes: G4, A4, B4, C5, B4, A4, G4, F#4, E4, D4, C4.

Musical staff with treble clef, key signature of three sharps, and 3/4 time signature. It contains a sequence of eighth notes: G4, A4, B4, C5, B4, A4, G4, F#4, E4, D4, C4.

B

Musical staff with treble clef, key signature of three sharps, and 3/4 time signature. It contains a sequence of eighth notes: G4, A4, B4, C5, B4, A4, G4, F#4, E4, D4, C4.

Musical staff with treble clef, key signature of three sharps, and 3/4 time signature. It contains a sequence of eighth notes: G4, A4, B4, C5, B4, A4, G4, F#4, E4, D4, C4.

C

Musical staff with treble clef, key signature of three sharps, and 3/4 time signature. It contains a dotted half note G4 followed by a double bar line and a measure with a whole note chord marked with a '7' above it.

D

Musical staff with treble clef, key signature of three sharps, and 3/4 time signature. It contains a sequence of eighth notes: G4, A4, B4, C5, B4, A4, G4, F#4, E4, D4, C4.



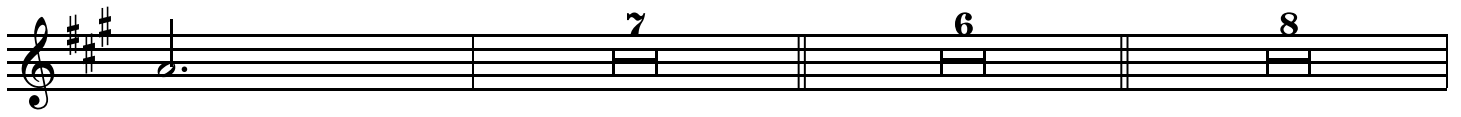
E



F

G

H



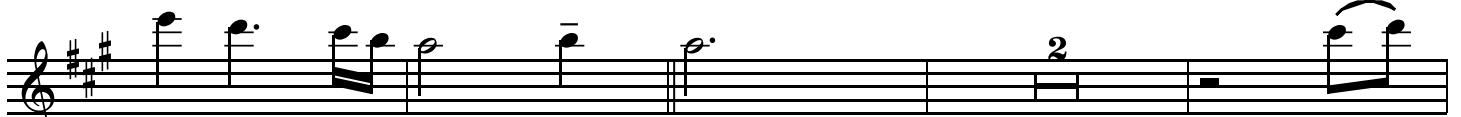
7

6

8

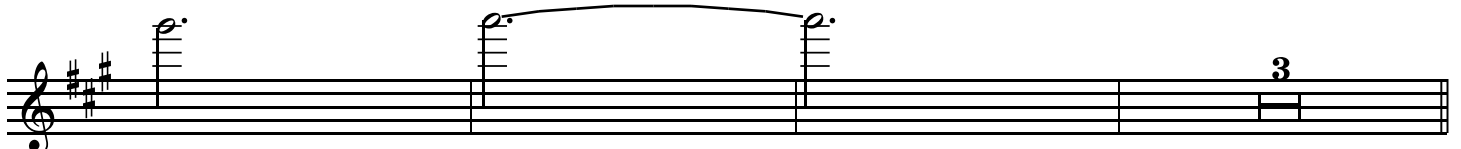
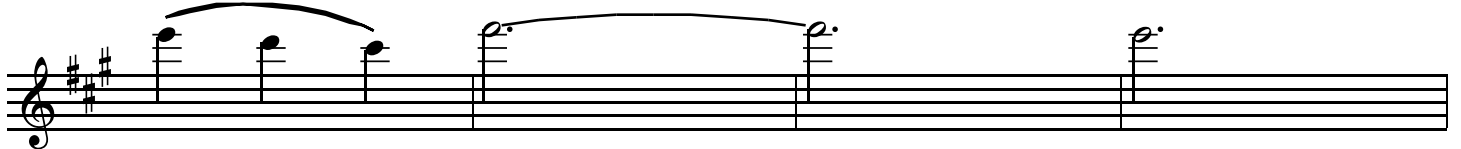


I



2

ff



3

J

Musical staff with treble clef, key signature of three sharps (F#, C#, G#), and a 3-measure rest followed by a melodic phrase starting with a triplet of eighth notes marked *mf*.

Musical staff with treble clef, key signature of three sharps, and a melodic phrase consisting of a half note followed by a quarter note with a fermata.