

Tpt 1

Hey Lady!

Fast swing!

Arranged By: Tom Kubis

A

Musical staff for section A, measures 4 and 16. The staff is in treble clef with a common time signature (C). Measure 4 contains a whole note chord. Measure 16 contains a whole note chord.

B

Musical staff for section B, measures 1-4. The staff is in treble clef with a common time signature (C). Measure 1 starts with a dynamic marking of *f*. Measures 1 and 2 contain quarter notes with accents (^). Measure 3 contains a quarter rest followed by an eighth note with a sharp sign (#). Measure 4 contains a quarter note with a sharp sign (#) and an accent (^).

Musical staff for section B, measures 5-8. The staff is in treble clef with a common time signature (C). Measure 5 contains a quarter note with an accent (^). Measure 6 contains a quarter rest. Measure 7 contains a quarter note with an accent (^) and a dynamic marking of *f*. Measure 8 contains a quarter note with a sharp sign (#) and an accent (^).

C

Musical staff for section C, measures 1-4. The staff is in treble clef with a common time signature (C). Measure 1 contains a quarter note with an accent (^) and a dynamic marking of *f*. Measure 2 contains a quarter rest. Measure 3 contains a quarter note with an accent (^). Measure 4 contains a quarter note with a flat sign (b) and an accent (^).

Musical staff for section C, measures 5-8. The staff is in treble clef with a common time signature (C). Measure 5 contains a quarter rest. Measure 6 contains a quarter note with an accent (^). Measure 7 contains a quarter note with an accent (^) and a dynamic marking of *ff*. Measure 8 contains a quarter note with a flat sign (b) and an accent (^).

Solo BG's on Q

Musical staff for Solo BG's on Q, measures 1-4. The staff is in treble clef with a common time signature (C). Measure 1 contains a quarter rest. Measure 2 contains a quarter note with an accent (^) and a dynamic marking of *f*. Measure 3 contains a quarter note with an accent (^). Measure 4 contains a quarter note with a flat sign (b) and an accent (^).

Musical staff for Solo BG's on Q, measures 5-8. The staff is in treble clef with a common time signature (C). Measure 5 contains a quarter note with an accent (^) and a dynamic marking of *ff*. Measure 6 contains a quarter rest. Measure 7 contains a quarter note with an accent (^) and a sharp sign (#). Measure 8 contains a quarter note with an accent (^) and a dynamic marking of *ff*.

D

Musical staff for section D, starting with a dynamic marking of *f*. It features a sequence of eighth notes with accents, including a tritone interval.

E **F**

Musical staff for sections E and F. Section E consists of a triplet of eighth notes. Section F consists of a single eighth note. Both sections include dynamic markings and accents.

G **H**

Musical staff for sections G and H. Section G begins with a dynamic marking of *ff*. Section H contains a series of eighth notes with accents and dynamic markings.

Musical staff featuring first and second endings. The first ending is marked with a '1' and the second with a '2'. The piece concludes with a triplet of eighth notes marked with a '3'.

Musical staff containing a six-measure rest, followed by a final eighth note with an accent and a dynamic marking of *f*.

I

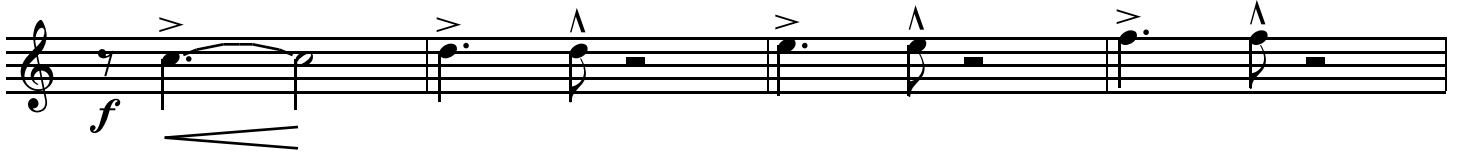
Musical staff for section I, featuring a complex melodic line with triplets and various accidentals.

Musical staff with a melodic line consisting of eighth notes and quarter notes, including various accidentals.

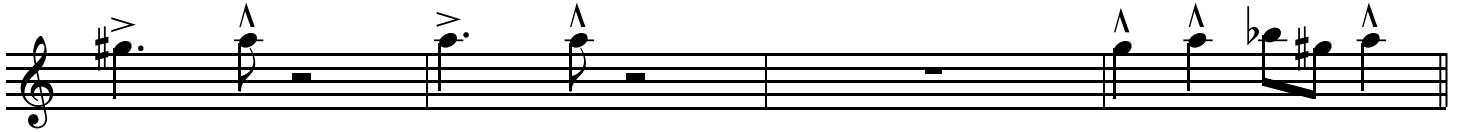
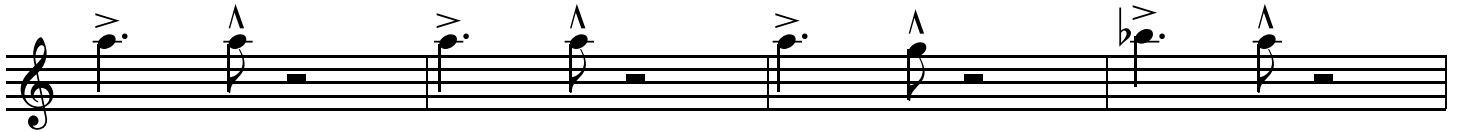
Open **On Cue**

Musical staff for the 'Open' and 'On Cue' sections. The 'Open' section is a four-measure rest, and the 'On Cue' section is an eight-measure rest.

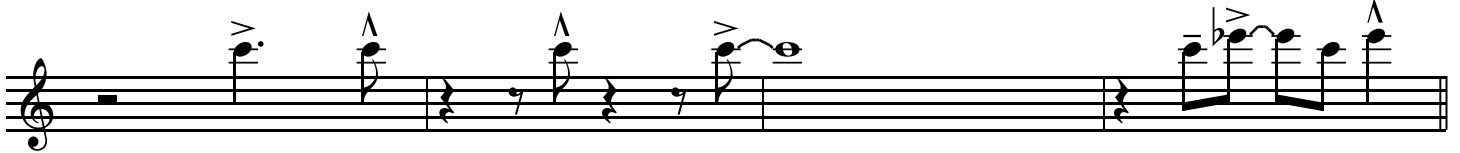
I



J



K



L

