

Tpt 1

A Passing Glance

Bossa- Bpm 115

Arranged By: Tom Kubis

Flugel

1

p

A

B

6

7 8

C

22

p

26

D

30

34

E

38

42

F

46

G

54

58

H

62

66

I

70

74

J

78

Musical staff for measure 78, starting with a treble clef and a key signature of one sharp (F#). The staff contains a half note G4, followed by a quarter note A4, a quarter note B4, and a half note C5. A slur covers the last two notes. A fermata is placed over the C5 note. The staff ends with a double bar line and a '2' above it, indicating a second ending.

82

Musical staff for measure 82, starting with a treble clef and a key signature of one sharp (F#). The staff contains a quarter rest, followed by a quarter note G4, a quarter note A4, a quarter note B4, a quarter note C5, a quarter note B4, a quarter note A4, and a quarter note G4. A slur covers the last three notes, with a '3' above it indicating a triplet. The staff ends with a double bar line and a '4' above it, indicating a fourth ending. The text 'To Trpt' is written above the staff.

L

88

Musical staff for measure 88, starting with a treble clef and a key signature of one sharp (F#). The staff contains a quarter rest, followed by a series of eighth notes: G4, A4, B4, C5, B4, A4, G4. A slur covers the last three notes. The staff begins with a dynamic marking of *f* (forte).

92

Musical staff for measure 92, starting with a treble clef and a key signature of one sharp (F#). The staff contains a quarter rest, followed by a series of eighth notes: G4, A4, B4, C5, B4, A4, G4. A slur covers the last three notes. The staff ends with a double bar line and a dynamic marking of *f* (forte).

M

96

Musical staff for measure 96, starting with a treble clef and a key signature of one sharp (F#). The staff contains a series of eighth notes: G4, A4, B4, C5, B4, A4, G4. A slur covers the last three notes. The staff ends with a double bar line and a dynamic marking of *f* (forte).

100

Musical staff for measure 100, starting with a treble clef and a key signature of one sharp (F#). The staff contains a quarter rest, followed by a series of eighth notes: G4, A4, B4, C5, B4, A4, G4. A slur covers the last three notes. The staff ends with a double bar line and a dynamic marking of *ff* (fortissimo).

N

104

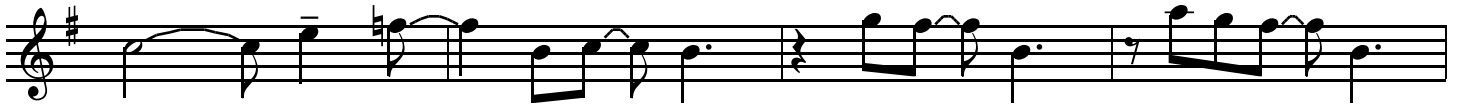
Musical staff for measure 104, starting with a treble clef and a key signature of one sharp (F#). The staff contains a quarter rest, followed by a quarter note G4, a quarter note A4, a quarter note B4, a quarter note C5, a quarter note B4, a quarter note A4, and a quarter note G4. A slur covers the last three notes, with a '3' above it indicating a triplet. The staff begins with a dynamic marking of *mf* (mezzo-forte).

O

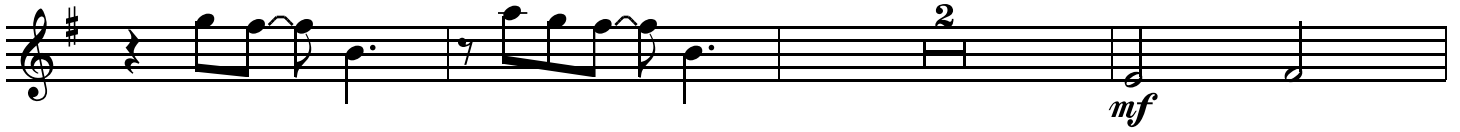
112

Musical staff for measure 112, starting with a treble clef and a key signature of one sharp (F#). The staff contains a half note G4, followed by a quarter note A4, a quarter note B4, and a half note C5. A slur covers the last two notes. The staff ends with a double bar line.

116



120



125

